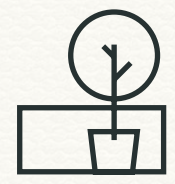


# FIRST FLOOR

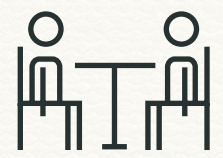
6,900 SQ FT / 641 SQ M



Private Terrace



3 x Phone Booths



4 x Meeting Rooms



66 x Desks



1 x Shower



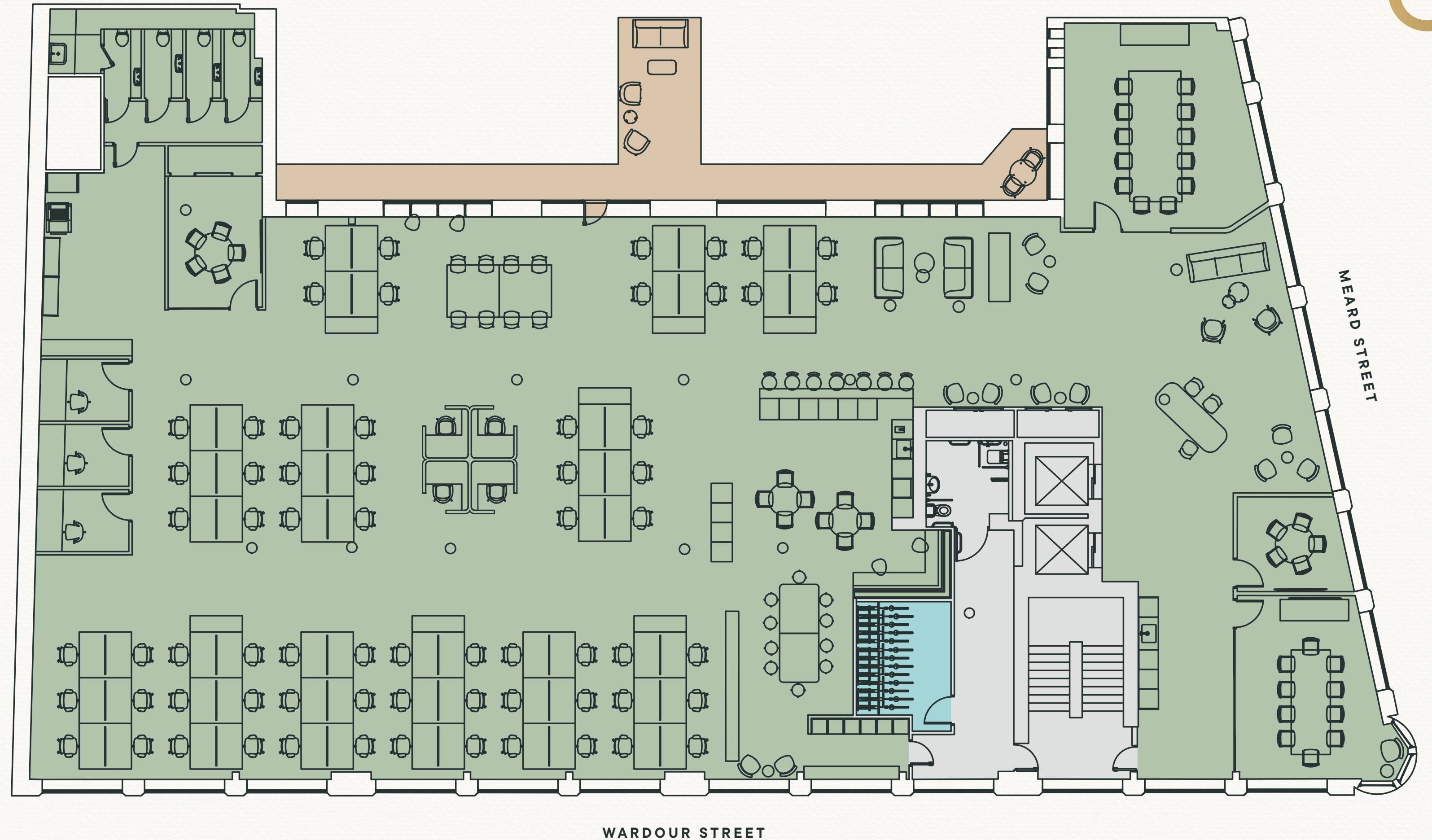
13 x Bike Racks



12 x Hot Desks



Kitchen & Breakout Area



WARDOUR STREET

MEARD STREET

For indicative purposes only. Not to scale. The floor is subject to final measurement.

● Office ● Private terrace ● Bicycle racks ● Core

NORTH

